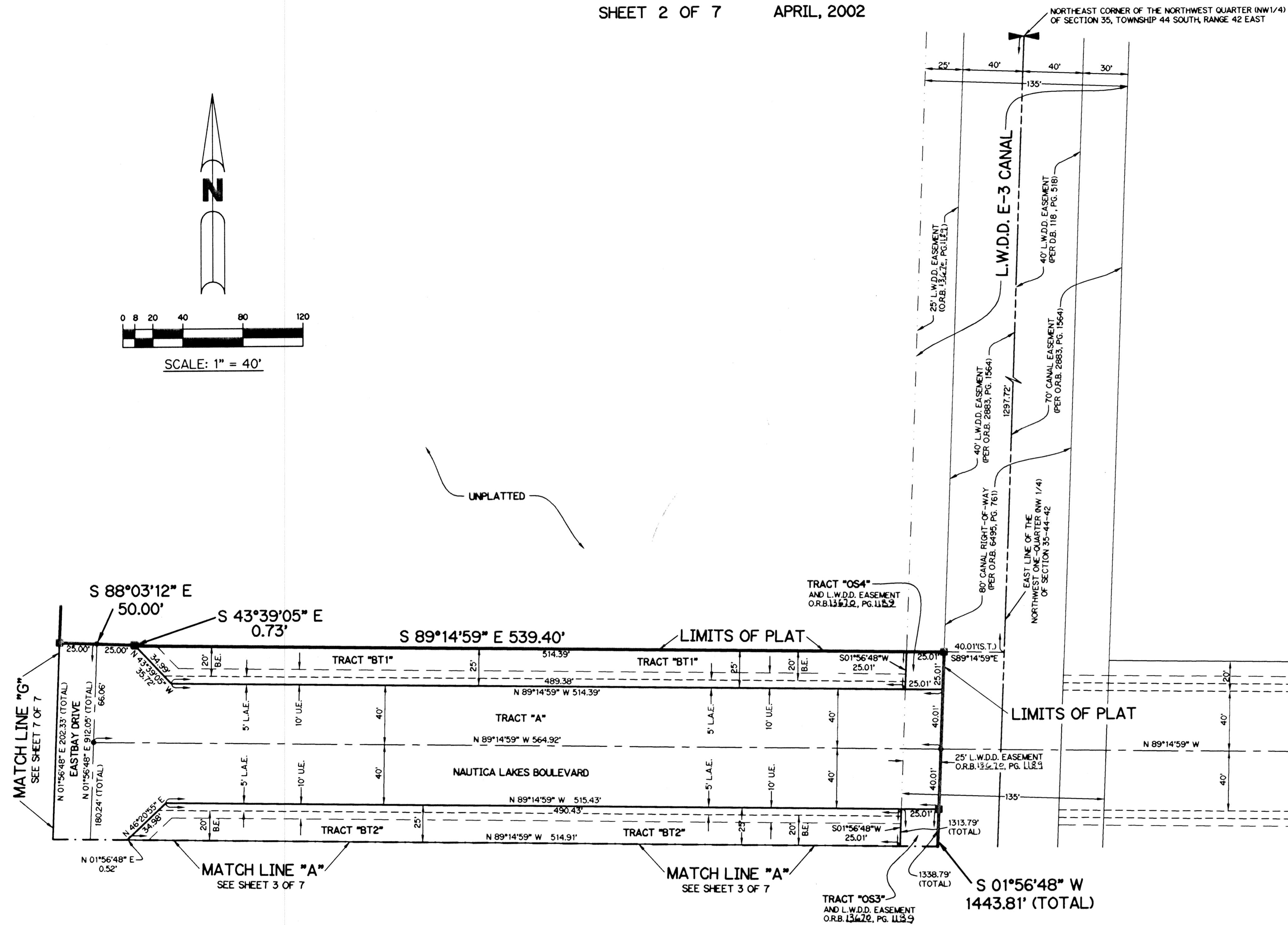
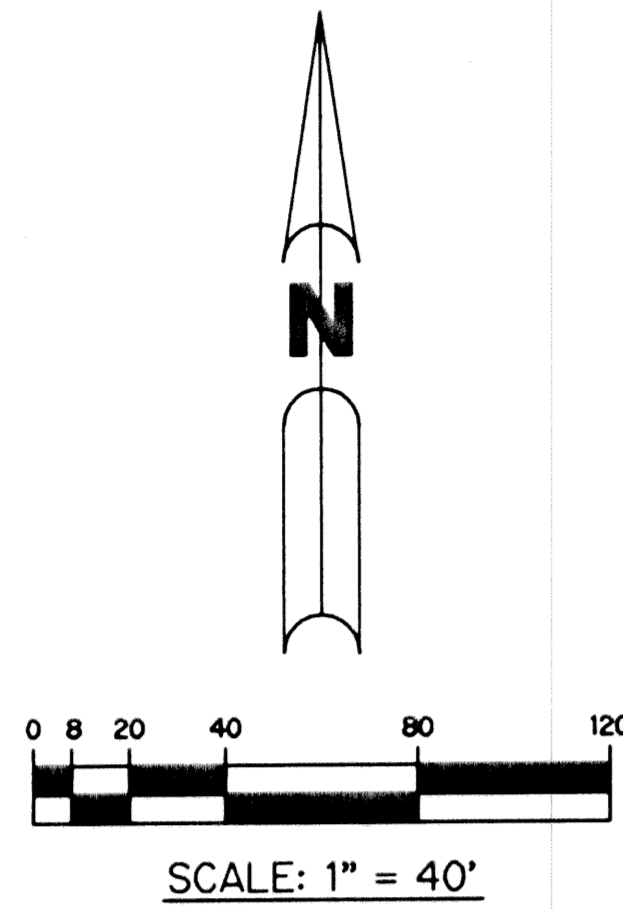


NAUTICA ISLES WEST - PLAT TWO

BEING A PORTION OF THE NORTHWEST ONE-QUARTER (N.W. 1/4) OF SECTION 35, TOWNSHIP 44 SOUTH, RANGE 42 EAST, CITY OF GREENACRES, PALM BEACH COUNTY, FLORIDA

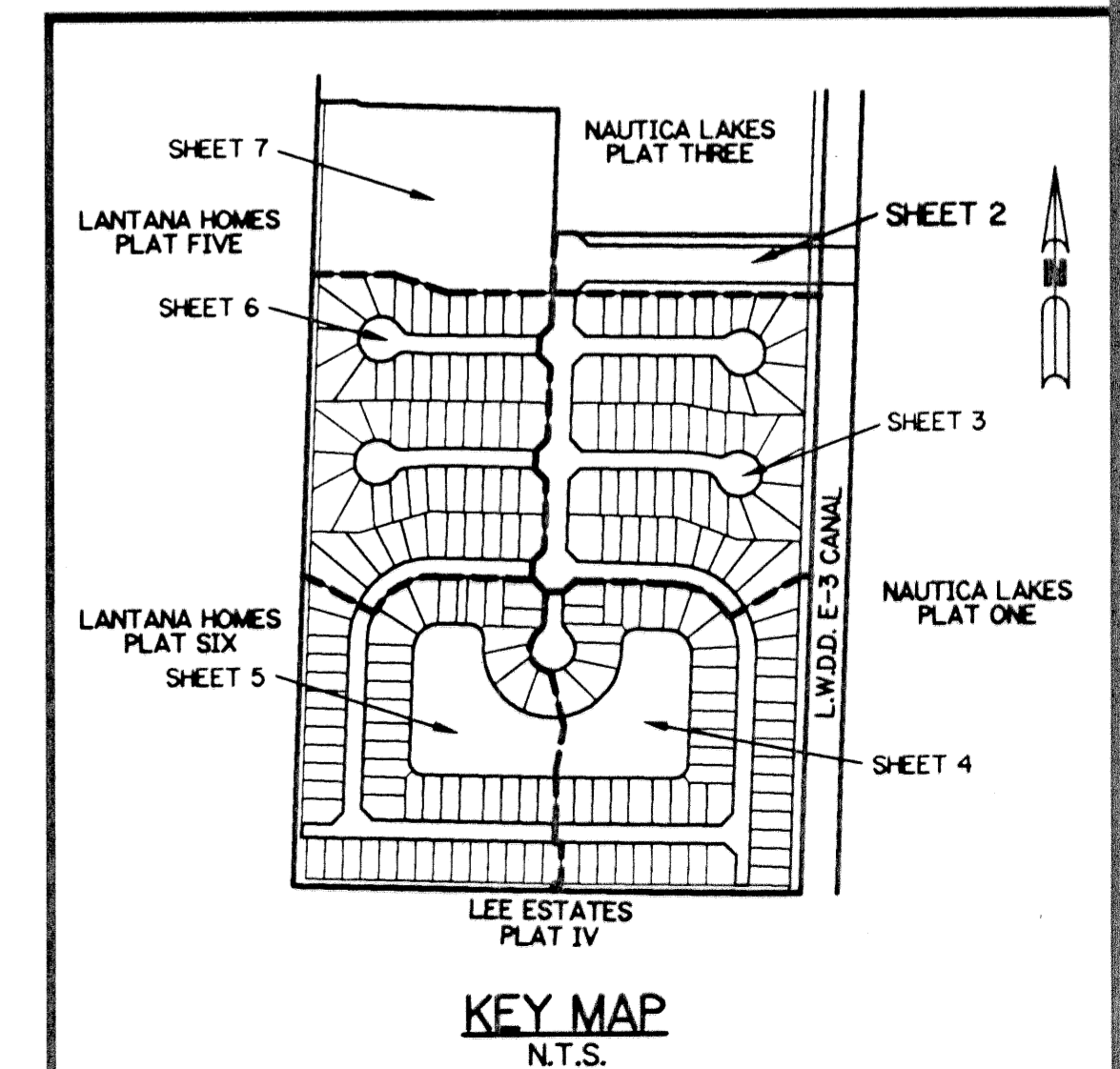
SHEET 2 OF 7 APRIL, 2002



LEGEND:

- - SET PERMANENT REFERENCE MONUMENT, L.B. #6674
- - FOUND PERMANENT REFERENCE MONUMENT, L.B. #6674
- - PERMANENT CONTROL POINT
- - FOUND PERMANENT CONTROL POINT, L.B. #6674
- △ - DELTA ANGLE
- B.E. - BUFFER EASEMENT
- CB - CHORD BEARING
- CH - CHORD DISTANCE
- C.L. - CENTERLINE
- D.B. - DEED BOOK
- D.E. - DRAINAGE EASEMENT
- L. - ARC LENGTH
- L.A.E. - LIMITED ACCESS EASEMENT
- L.M.A.E. - LAKE MAINTENANCE ACCESS EASEMENT
- L.M.E. - LAKE MAINTENANCE EASEMENT
- L.W.D.D. - LAKE WORTH DRAINAGE DISTRICT
- N.R. - NOT RADIAL
- N.T.S. - NOT TO SCALE
- O.R.B. - OFFICIAL RECORD BOOK
- P.B. - PLAT BOOK
- P.G.S. - PAGES
- P.S.M. - PROFESSIONAL SURVEYOR AND MAPPER
- R. - RADIUS
- RAD. - RADIAL
- R/W - RIGHT-OF-WAY
- S.T. - SURVEY TIE
- U.E. - UTILITY EASEMENT

THIS INSTRUMENT PREPARED BY
 PERRY C. WHITE, P.S.M. 4213, STATE OF FLORIDA
 LAWSON, NOBLE AND WEBB, INC.
 ENGINEERS PLANNERS SURVEYORS
 420 COLUMBIA DRIVE
 WEST PALM BEACH, FLORIDA 33409
 LB-6674



KEY MAP
N.T.S.